

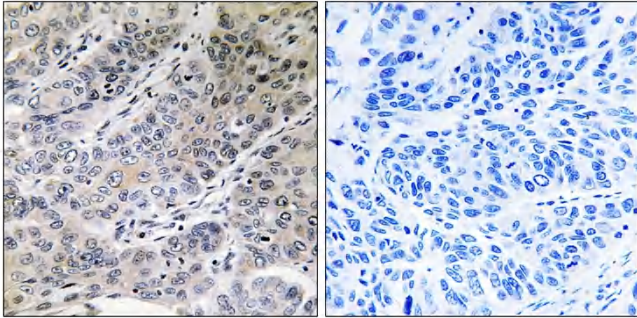


Brp44 Polyclonal Antibody

Catalog No	YP-Ab-01573
Isotype	IgG
Reactivity	Human;Mouse;Rat
Applications	IHC;IF;ELISA
Gene Name	MPC2
Protein Name	Mitochondrial pyruvate carrier 2
Immunogen	The antiserum was produced against synthesized peptide derived from human BRP44. AA range:31-80
Specificity	Brp44 Polyclonal Antibody detects endogenous levels of Brp44 protein.
Formulation	Liquid in PBS containing 50% glycerol, 0.5% BSA and 0.02% sodium azide.
Source	Polyclonal, Rabbit,IgG
Purification	The antibody was affinity-purified from rabbit antiserum by affinity-chromatography using epitope-specific immunogen.
Dilution	IHC: 1/100 - 1/300. ELISA: 1/40000.. IF 1:50-200
Concentration	1 mg/ml
Purity	≥90%
Storage Stability	-20°C/1 year
Synonyms	MPC2; BRP44; Mitochondrial pyruvate carrier 2; Brain protein 44
Observed Band	
Cell Pathway	Mitochondrion inner membrane ; Multi-pass membrane protein .
Tissue Specificity	Brain,Thalamus,
Function	similarity:Belongs to the UPF0041 (0-44) family.,
Background	similarity:Belongs to the UPF0041 (0-44) family.,
matters needing attention	Avoid repeated freezing and thawing!
Usage suggestions	This product can be used in immunological reaction related experiments. For more information, please consult technical personnel.



Products Images



Immunohistochemistry analysis of paraffin-embedded human lung carcinoma tissue, using BRP44 Antibody. The picture on the right is blocked with the synthesized peptide.